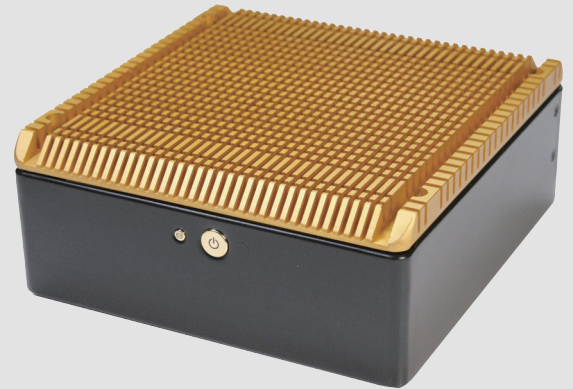


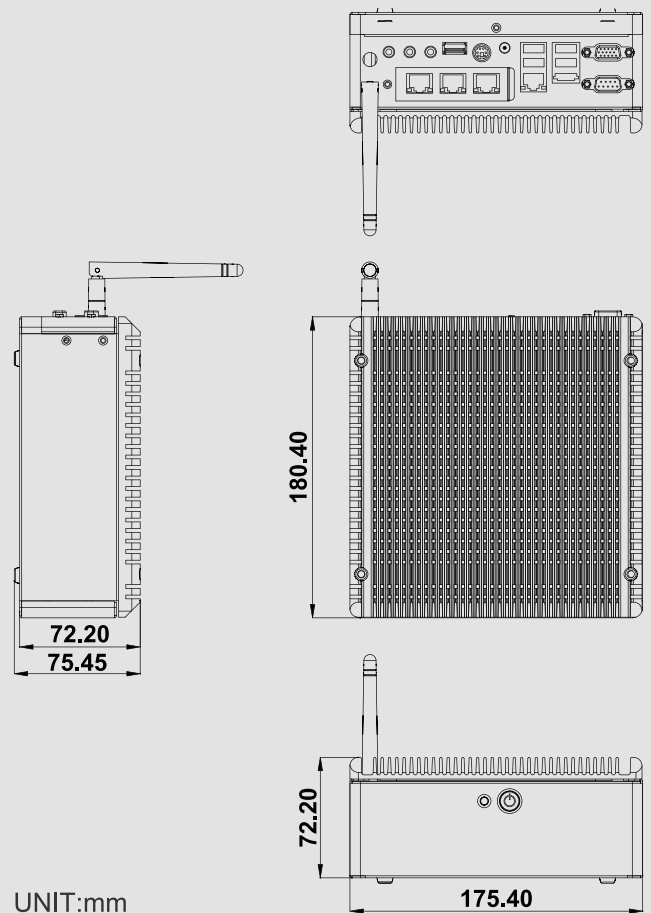
### Feature :

1. Special design for ODM/OEM projects.
2. Simple assembling and easy system integration.
3. Compatible with Intel Atom D525 Motherboard.
4. Support Single Channel DDR2 800
5. Integrated LVDS support 18-bit Single Channel.
6. Support 1x Gigabit LAN(or 4 x Gigabit LAN optional)
7. Support ACPI S3 Function.
8. Support Watchdog Technology.



### Specifications :

Front Panel	<ul style="list-style-type: none"> <li>● Power switch contain LED x 1.</li> <li>● HDD LED x 1.</li> </ul>
Back Panel	<ul style="list-style-type: none"> <li>● USB2.0/1.1 port x 5.</li> <li>● PS2/KB Connector x 1.</li> <li>● RJ-45 port x 1.</li> <li>● Com port x 1.</li> <li>● VGA port x 1.</li> <li>● E-SATA port x 1.</li> <li>● Antenna cutoff hole x 1.</li> <li>● Audio phone jack x 3.</li> </ul>
Internal Structure	<ul style="list-style-type: none"> <li>● Thermal pads / Aluminum thermal block combination are positioned at the top of the CPU and transfer the heat to the Aluminum-made heat sink surface of the top cover.</li> <li>● 2.5" SATA HDD x 1.</li> </ul>
Dimension ( WxDxH )	6.9 x 7.1 x 2.84 inch ( 175.4x 180.40 x 72.2 mm )
Material	Extruded aluminum.
Surface	Aluminum with anodized finish.
Colour	Black. Champagne Gold Customizable colour.



### Power Solutions :

External AC adapter
60 Watts (12V) or 80 Watts (12V)