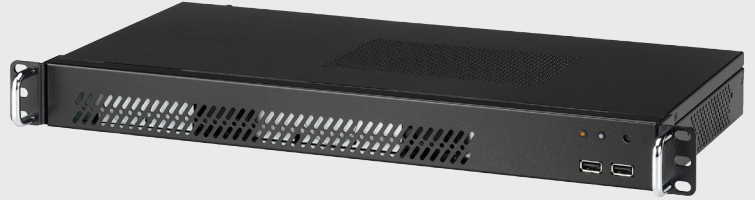


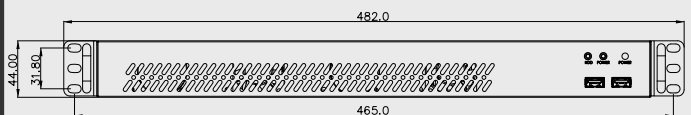
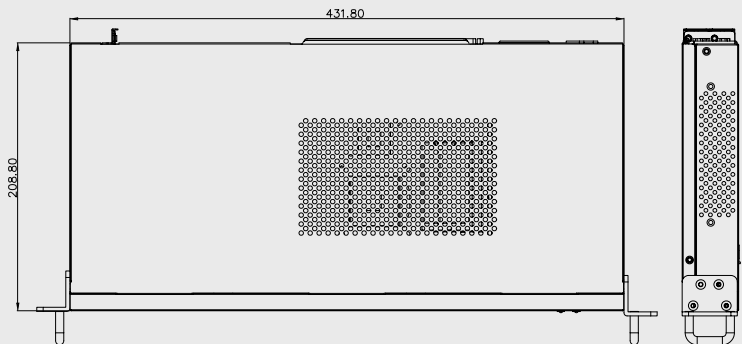
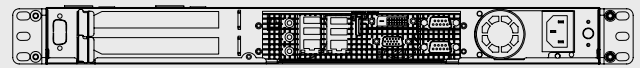
Feature :

1. 1U industrial rackmount platform for mini-itx form factor motherboard
2. Easy system integration
3. Dual PCI expansion slot enabled and Dual PCI riser card included
4. Small dimension (208.80 mm (D))
5. PCI-E X16 riser card (Option)



Specifications :

Front Panel	<ul style="list-style-type: none"> ● Power switch x 1. ● Power LED x 1. ● HDD LED x 1. ● USB Port x 2 . ● Reset switch x 1.
Back Panel	<ul style="list-style-type: none"> ● Travla patented nickel-plated plastic universal I/O shield ● Expansion PCI slot x 2. ● Extra DB9 port x 1.
Internal Structure	<ul style="list-style-type: none"> ● 4cm system cooling x 2. (Add 2 FAN option) ● Standard memory height. ● 2.5" HDD x 1 or 3.5" HDD x 1 or 2.5" HDD x 2.
Dimension (WxDxH)	19.0 x 8.2 x 1.74 inch (482.0 x 208.8 x 44 mm)
Material	Heavy dust cold-rolled steel.
Surface	Black wet paint with texture coat.
Colour	Black. Customizable colour.



Power Solutions :

Internal Power Supply	External AC adapter
T8 (80W) DC Power Board	60 Watts (12V) or 80 Watts (12V)
OPEN FRAME 12V/80W	None
C4 (150W) DC Power Board	90 Watts (19V) or 120 Watts (19V) or 150 Watts (19V)
250W/300W/400W Flex ATX Power Supply	

UNIT:mm