

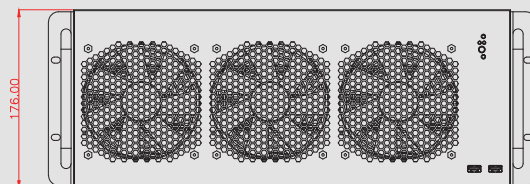
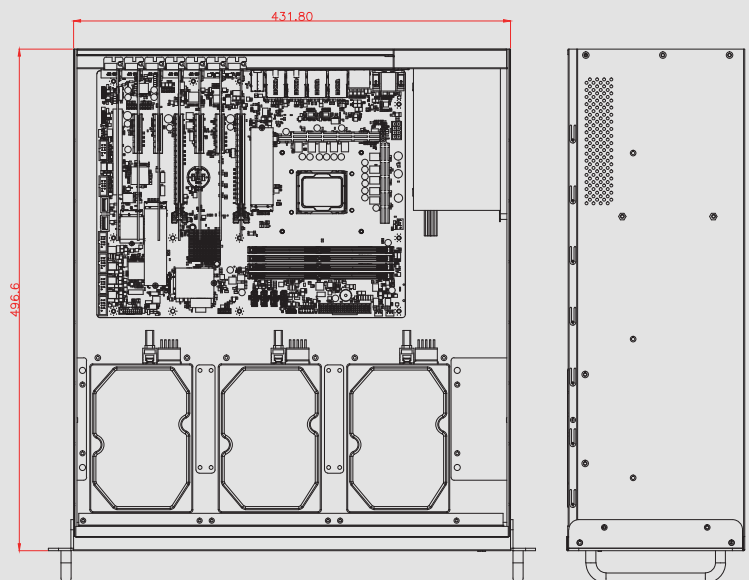
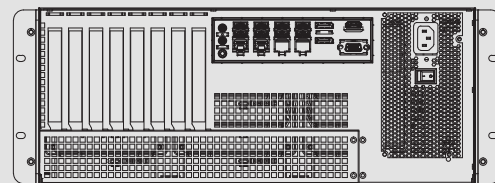
Feature :

1. 4U rackmount server chassis for ATX system
2. Support up to 8 x expansion slot
3. Support 18 x 3.5" SATA tray
4. Excellent cooling with 3 x 12cm fan(2 ball bearing)



Specifications :

| | |
|-----------------------------|--|
| Front Panel | <ul style="list-style-type: none"> ● Power Switch x 1 ● Power LED x 1 ● HDD LED x 1 ● USB Port x 2 ● 3.5" Tray x 18 |
| Back Panel | <ul style="list-style-type: none"> ● Standard I/O shield x 1 ● Support PCI or PCI-e long card x 8 |
| Internal Structure | <ul style="list-style-type: none"> ● 12cm system cooling fan x 3 |
| Dimensions (W x D x H) | 17.0 x 19.55 x 6.92 inch (431.8 x 496.6 x 176.0 mm) |
| Material | Heavy dust cold-rolled steel. |
| Surface | Black wer paint with texture coat |
| Color | Black. Customizable colour |



Power Solutions :

| |
|-------------------------|
| Internal Power Supply |
| PSII Power Supply 1000W |

UNIT:mm